

## Product Applications



Signages and Signals



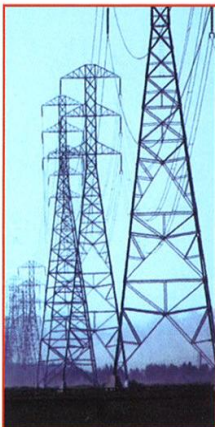
Shipping



Oil & Petrochemical



Refineries & Industries



Power Utilities



Locomotive



Automotive



Communication



Cable installations

## Stainless Steel Cable Ties

R-Loc Stainless Steel cable ties provide solutions to all your clamping problems. R-Loc cable ties are used world-wide to secure POLES, CABLES, PIPES and perform host of other clamping functions.

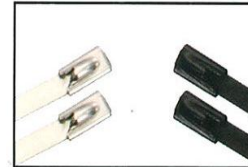
"R-Loc" cable ties not only have high resistance to heat but can also stand the test of salts and acids. They are the perfect choice for Indoor, Outdoor and Underground applications. R-Loc cable ties have rounded edges and are safe for handling. To ensure the security of your clamping functions, R-Loc ties are subjected to rigorous physical and chemical testing. Cable ties are randomly subjected to loop tensile strength.

R-Loc Cable ties are offered in both AISI 304 (EN DIN 1.4301) and AISI 316 (EN DIN 1.4401) Stainless Steel. We provide customised solutions including designing, testing, validation and stimulation through our in house testing facilities.

### Types of SS Cable Ties

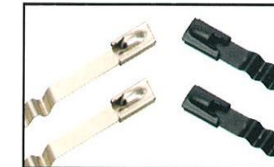
#### Ball Lock Cable Tie

BUXX-XXX BCXX-XXX



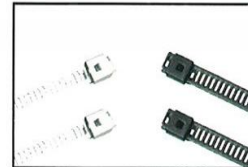
#### Spring Type Ball Lock Cable Tie

BUzXX-XXX BCzXX-XXX



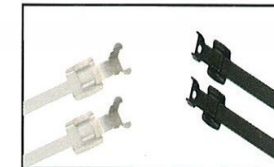
#### Ladder Cable Tie

LUXX-XXX LCXX-XXX



#### Releasable Cable Tie

RUXX-XXX RCpXX-XXX



#### Designation of locking arrangement :

X	X	X	X	XXX
↓	↓	↓	↓	↓
1	2	3	4	5

1. R - For Releasable Type  
L - For Ladder Type  
B - For Roller Ball Type
2. U - Un-coated, C- Coated, Cp - PPA Coated  
Uz - Spring Un-coated, Cz- Spring Coated
3. Indicates Width
4. Indicates Grade of Material
5. Indicates Length of Tie.

