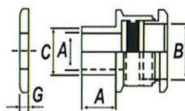
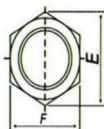


## SINGLE COMPRESSION TYPE CABLE GLAND - UNARMoured CABLE

Raychem RPG single compression type economic range glands are used with unarmoured cable, secures & provides electrical continuity between unarmoured cable and gland entry component. Also provides a seal on the outer sheath of the cable, thus ensuring no damage to cable sheathing. Used both indoor & outdoor in all climatic conditions as it is weatherproof & waterproof.



Max. O.D.	Cable Dimn. Overall Dia.		Nipple Entry Thread		Cable Gland Dimensions							Product Code
	Over	Under	Inch.	mm.	A	B	C	D	E	F	G	
14.0	12.0	10.0	3/8"	10	11.5	12.5	15.5	7.5	20.5	18.0	2.5	RRPLSC - 10
16.0	15.0	10.0	1/2"	12	12.0	15.0	15.5	8.5	25.0	22.0	3.0	RRPLSC - 12
16.0	16.0	10.0	5/8"	16	14.5	16.5	18.5	8.0	24.0	21.0	2.5	RRPLSC - 16
18.0	16.5	14.0	3/4"	19	14.5	17.5	19.0	8.5	26.0	23.0	2.5	RRPLSC - 19
20.0	17.5	16.5	7/8"	22	14.5	20.0	18.5	8.5	29.0	25.0	3.0	RRPLSC - 22
23.0	20.5	18.5	1"	25	20.5	23.0	25.0	9.0	33.0	29.0	3.0	RRPLSC - 25
30.0	27.5	22.5	1-1/8"	28	24.0	28.0	28.5	10.5	40.0	35.0	3.5	RRPLSC - 28
30.0	27.5	26.5	1-1/4"	32	27.0	32.0	31.5	11.0	46.0	40.0	3.5	RRPLSC - 32
33.0	33.0	29.6	1-3/8"	35	29.5	35.5	34.5	11.0	50.0	44.0	4.0	RRPLSC - 35
38.0	37.0	33.5	1-1/2"	38	33.0	39.5	38.0	11.5	54.0	47.0	4.0	RRPLSC - 38
45.0	40.0	37.5	1-3/4"	45	40.0	44.5	44.0	11.5	62.0	54.0	4.5	RRPLSC - 45
49.0	43.0	43.5	2"	50	45.0	51.5	50.0	13.0	69.0	60.0	5.0	RRPLSC - 50
55.0	52.0	49.0	2-1/4"	57	51.5	58.0	56.5	13.0	78.0	68.0	5.0	RRPLSC - 57
61.0	56.0	64.5	2-1/2"	63	57.5	62.5	63.0	14.0	82.0	72.0	5.0	RRPLSC - 63
67.0	67.0	61.5	2-3/4"	70	63.5	69.0	69.0	15.0	90.0	80.0	5.0	RRPLSC - 70
73.0	73.0	66.5	3"	75	68.0	75.0	75.0	16.0	99.0	87.0	5.5	RRPLSC - 75
80.0	74.0	72.5	3-1/4"	82	75.0	81.5	82.0	16.0	105.0	92.0	6.0	RRPLSC - 82
83.0	83.0	80.5	3-1/2"	88	81.5	86.5	88.0	16.0	115.0	102.0	6.0	RRPLSC - 88
95.0	95.0	84.0	4"	100	92.0	101.0	100.0	17.0	126.0	110.0	6.5	RRPLSC - 100
105.0	108.0	100.0	4-1/2"	112	107.0	109.0	105.0	20.0	148.0	129.5	7.5	RRPLSC - 112

## MARINE-USE WATERTIGHT CABLE GLANDS

Material : Brass, Finish : Nickel Plated

No. of Parts: Body, Clamping Gland, Lock Nut, Two Brass Washers, Rubber Thread Seal, Rubber Inner Compression Ring.

Pipe Thread A	Gland ID in mm	Rubber ID C	Locknut OD in mm D	Gland OD in mm L	Total Length	Product Code
PF 3/8"	10	8	28	22	38	RRPLMG - 10
PF 1/2"	15	10	31.5	28	42	RRPLMG - 15
PF 3/4"	20	13	37	33.5	46	RRPLMG - 20
PF 1"	25	15	45	42	52	RRPLMG - 25
PF 1 1/4"	30	24	46	49.5	57	RRPLMG - 30
PF 1 1/2"	40	30	63	55	65	RRPLMG - 35
PF 1 1/2"	40	34	63	55	65	RRPLMG - 40
PF 2"	45	38	77	69	73	RRPLMG - 45
PF 2"	50	44	77	69	73	RRPLMG - 50
PF 2 1/2"	55	48	96	85	83	RRPLMG - 55
PF 2 1/2"	60	54	96	85	83	RRPLMG - 60
PF 3"	65	60	112	100	95	RRPLMG - 65
PF 3"	70	64	112	100	95	RRPLMG - 70

